

Community-based Conservation Planning



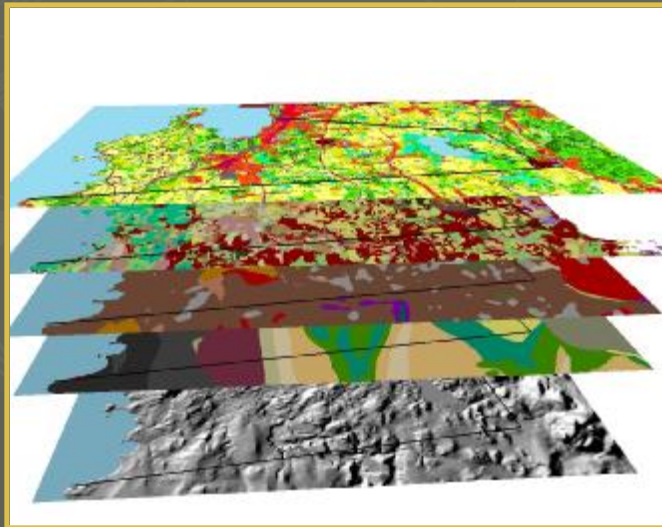
Jens C. Hilke
Community Wildlife Program



Community Wildlife Program

For towns, regional planning commissions and NGOs
doing conservation planning

- ▶ Technical Assistance with land use & conservation planning
- ▶ Reviewing Town Documents
- ▶ Development of conservation strategies tailored to your town's needs

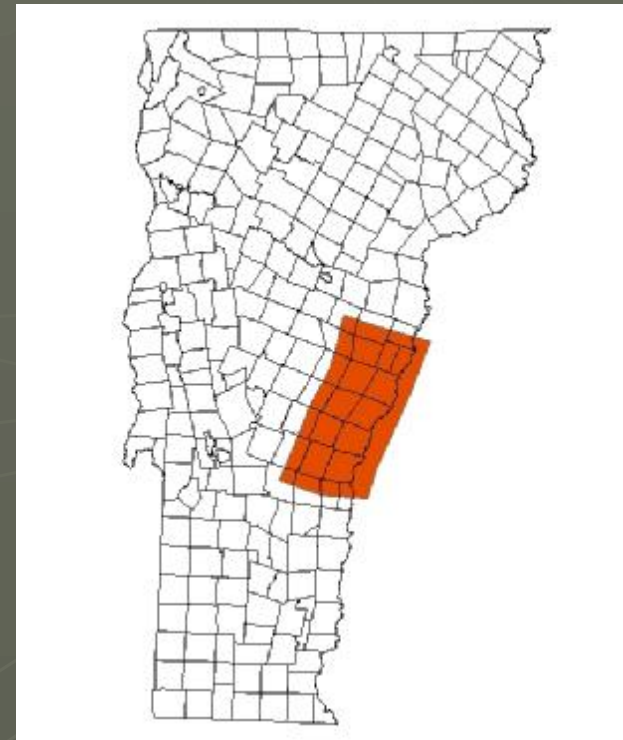


Jens Hilke
Conservation Biologist

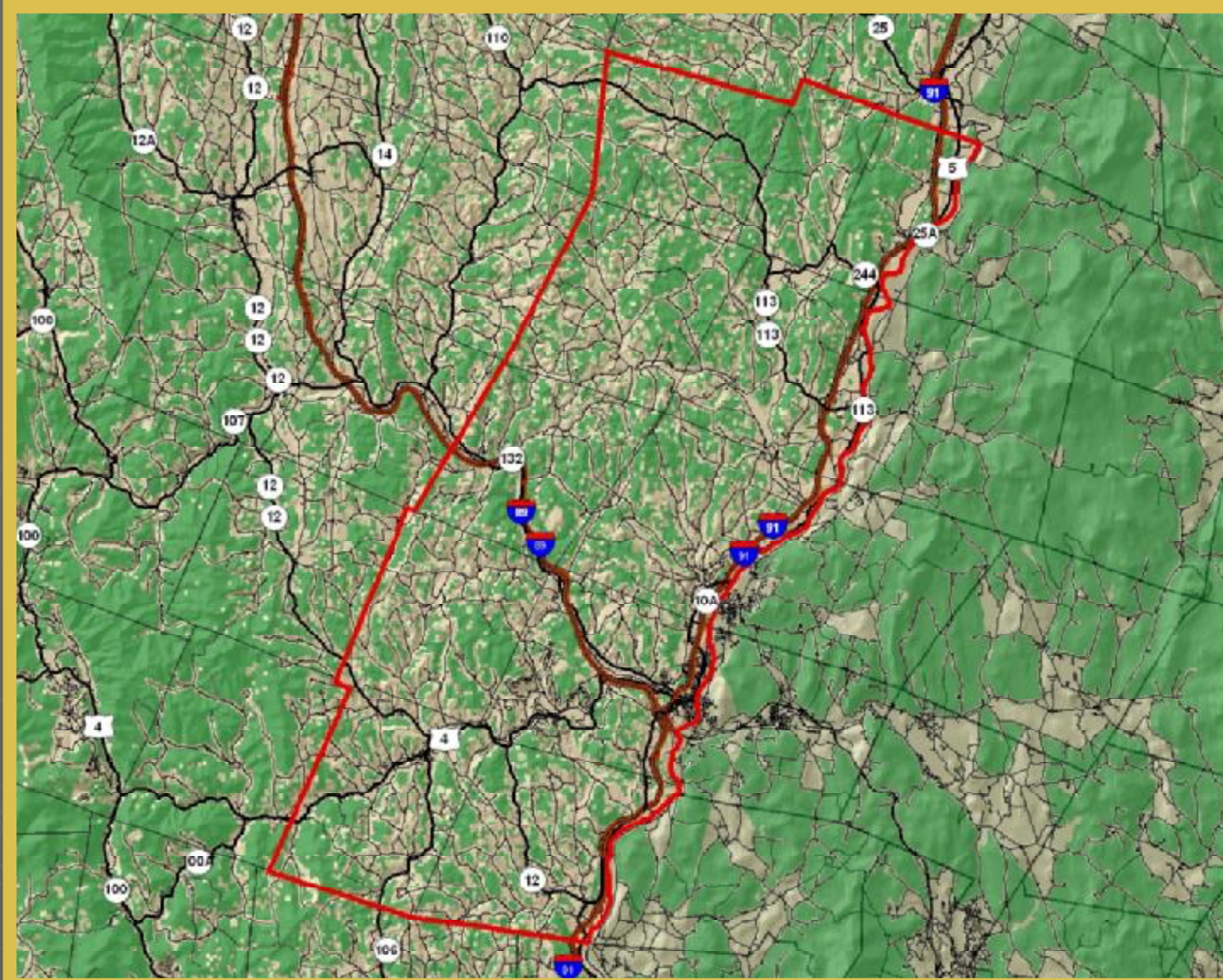
Case Study

Linking Lands Alliance mapping and planning wildlife habitat connectivity in an 11 town region.

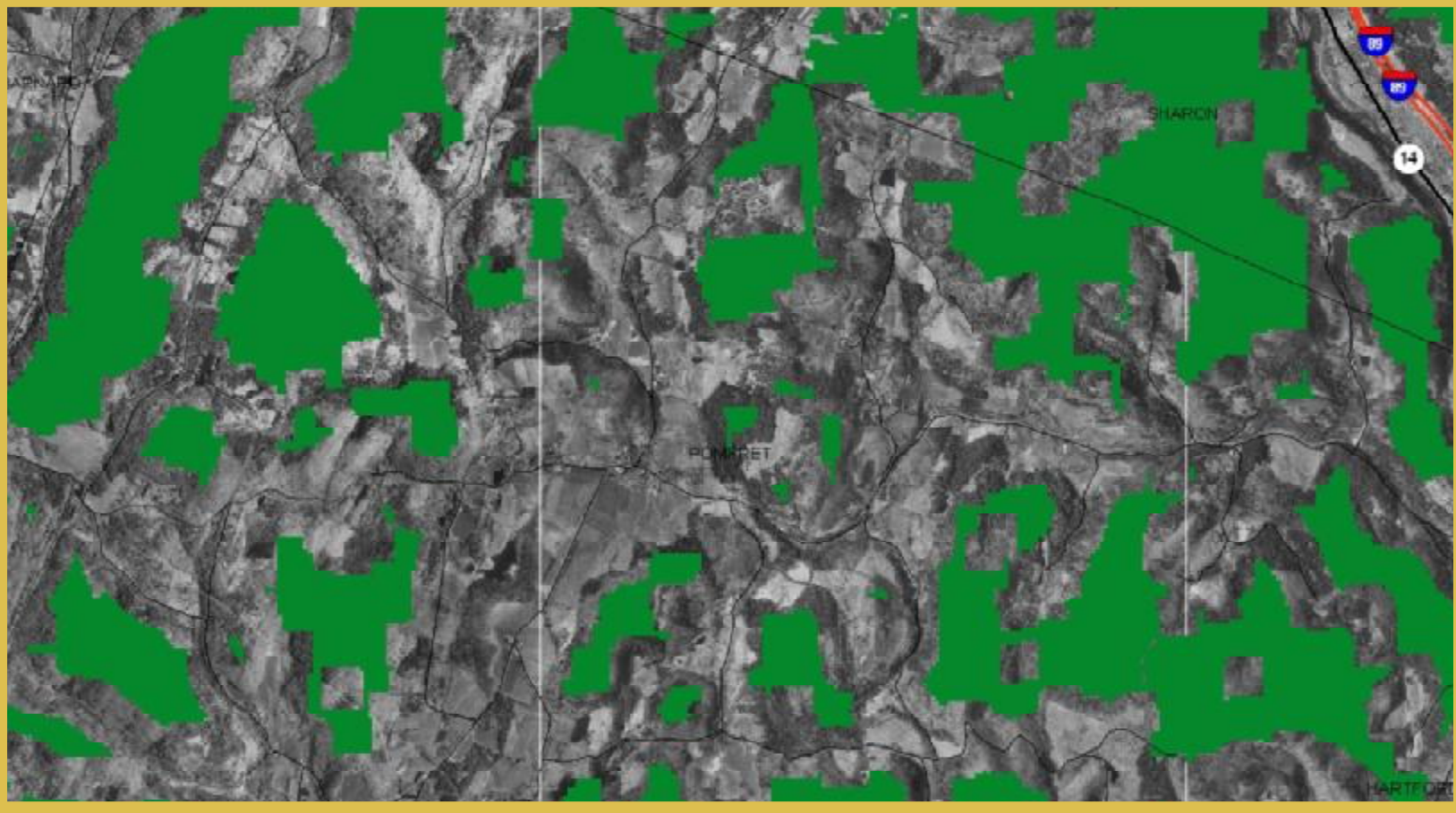
- ▶ Why Conservation Planning?
- ▶ Habitat Connectivity
- ▶ Using Science and Values to Inform Planning



Core Forests (100m from development)

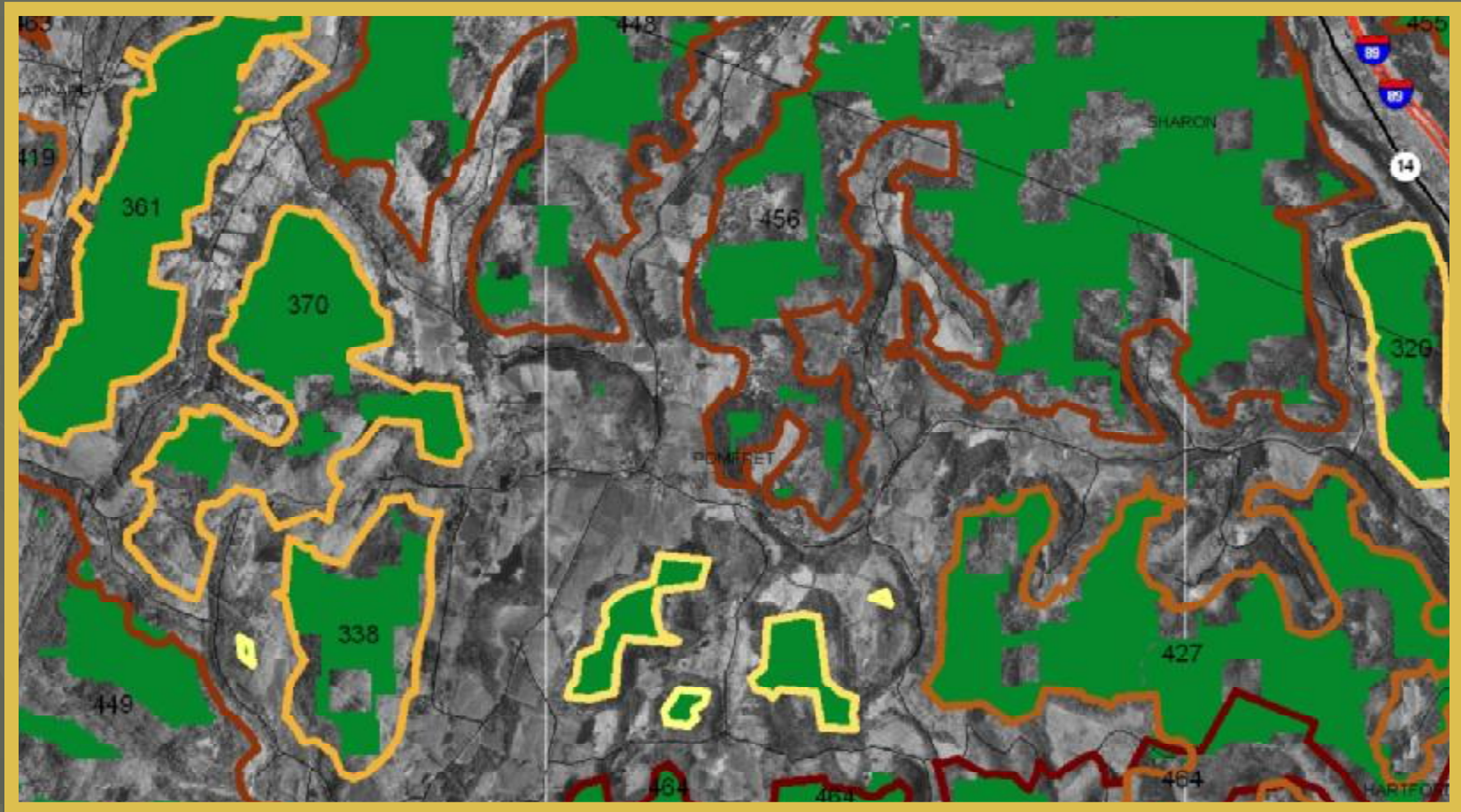


Habitat Blocks and Connectivity Mapping



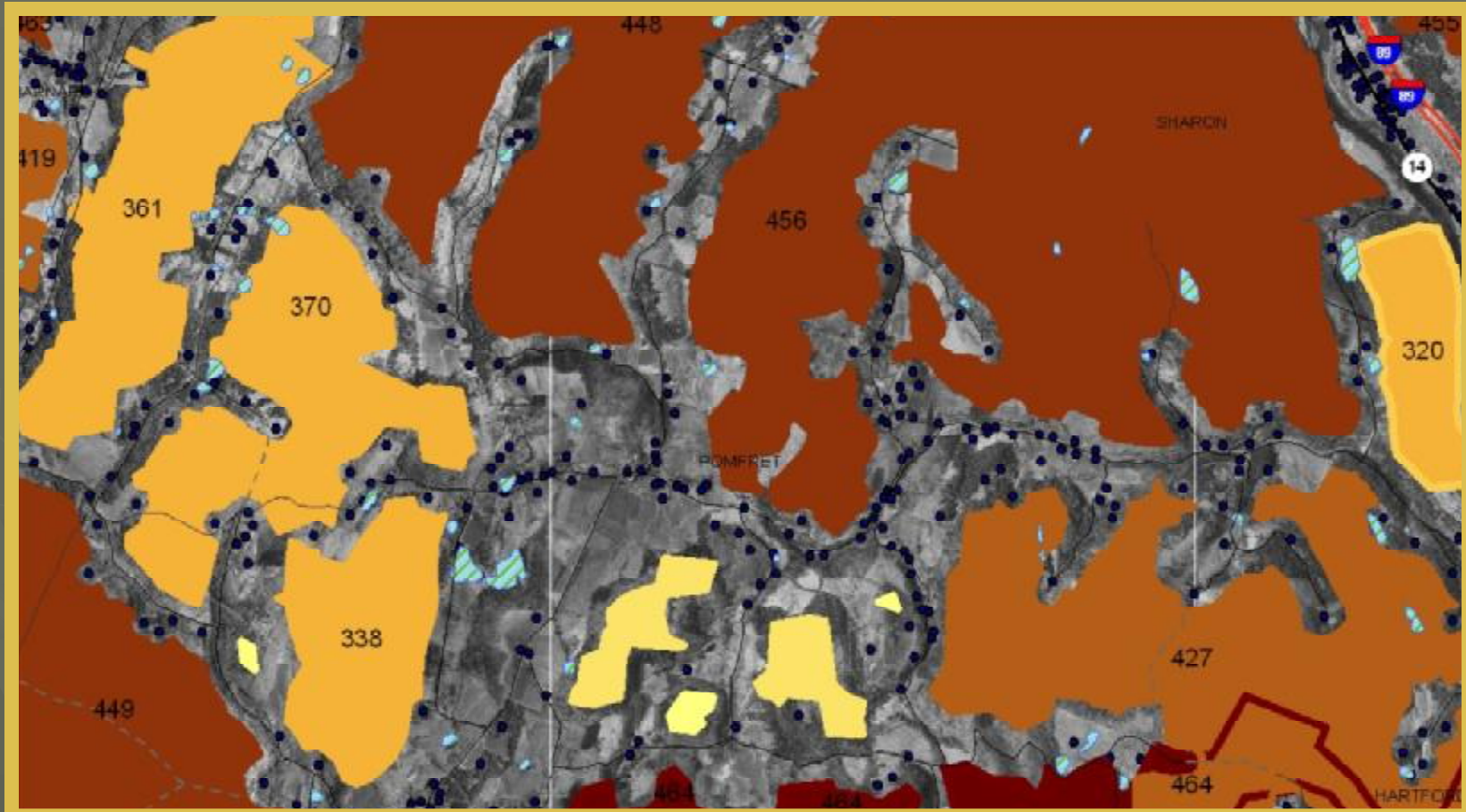
Core Forest, Pomfret, VT

Habitat Blocks and Connectivity Mapping



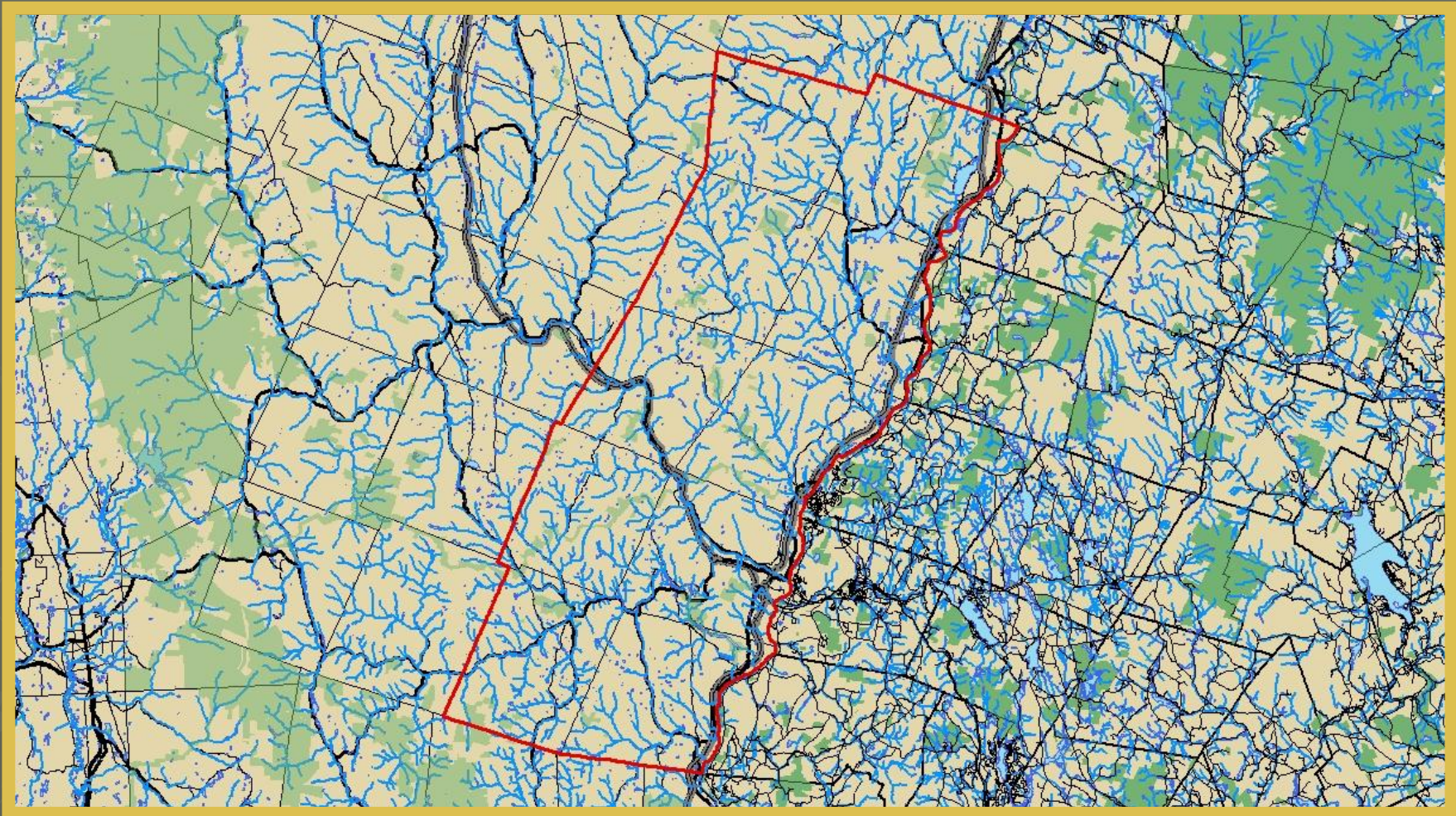
Core Forest & Habitat Blocks, Pomfret, VT

Habitat Blocks and Connectivity Mapping

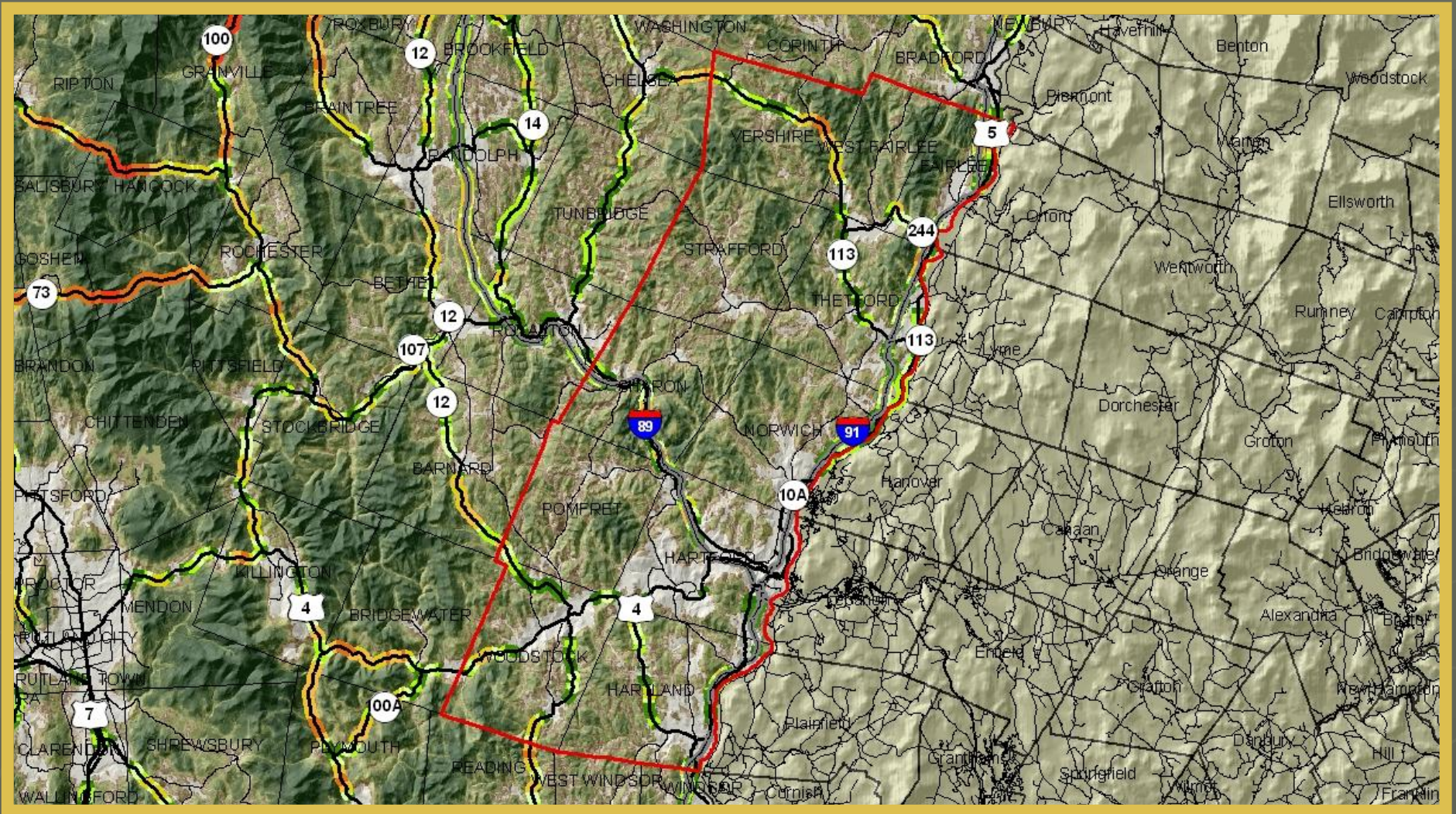


Habitat Blocks & Wetlands, Pomfret, VT

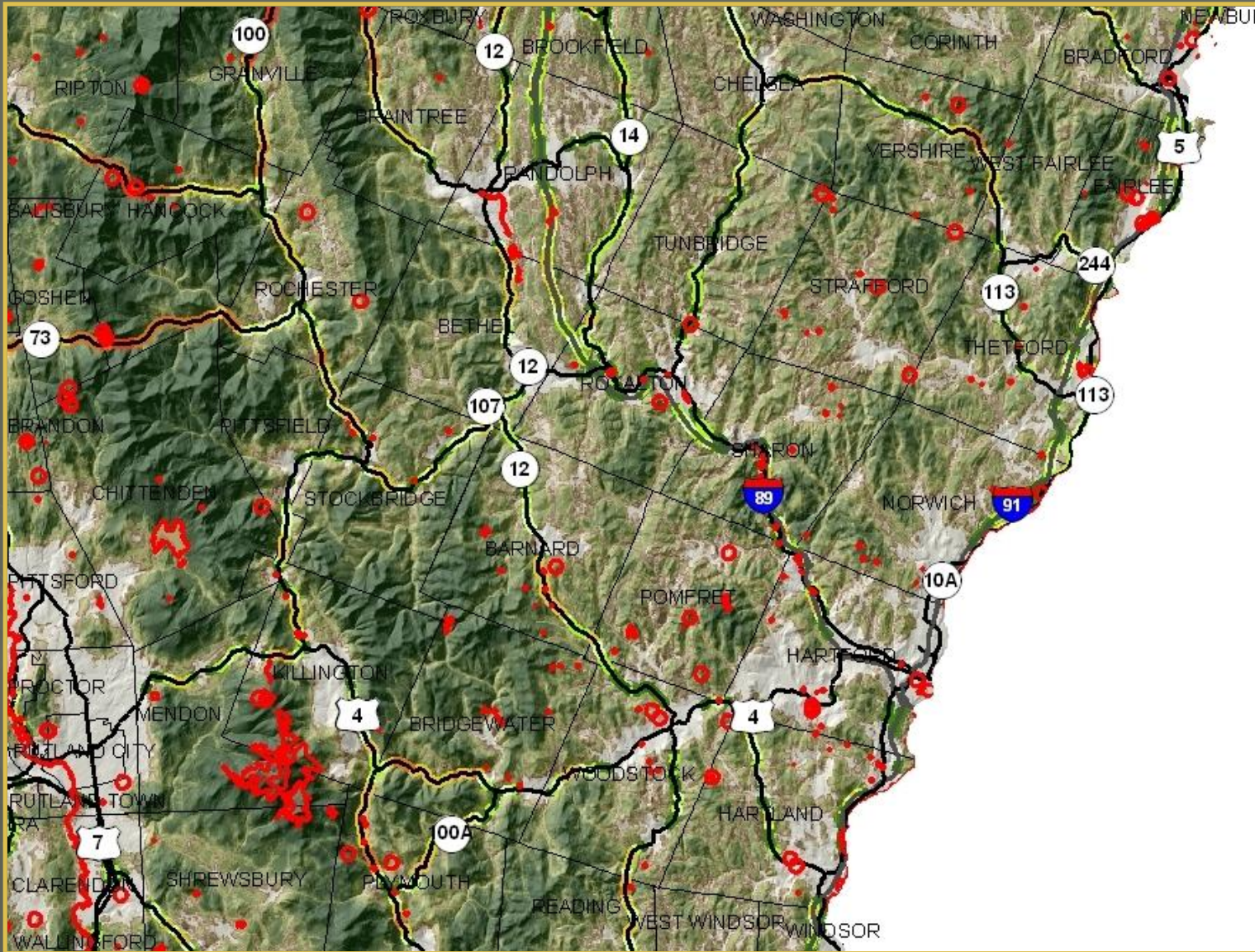
Wetlands, Riparian Areas & Conserved Lands



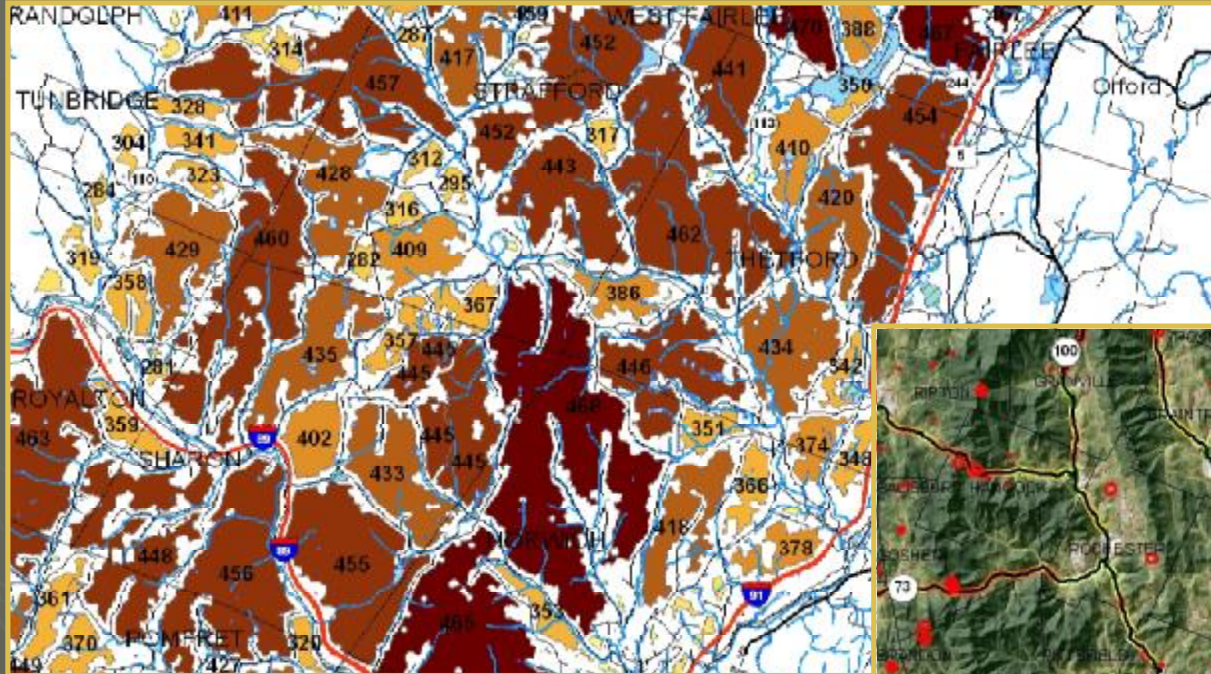
Road Crossings



Rare, Threatened & Endangered Species and Significant Natural Communities



Balancing the Coarse Filter & Single Species Management



Mapping habitat blocks, Crossings, Corridors

Field Work



Consulting
Professional

Citizen Science

Ecological Planning Grid

Lewis Creek Association Conservation Planning page 4 (212.212B, Shellhouse)

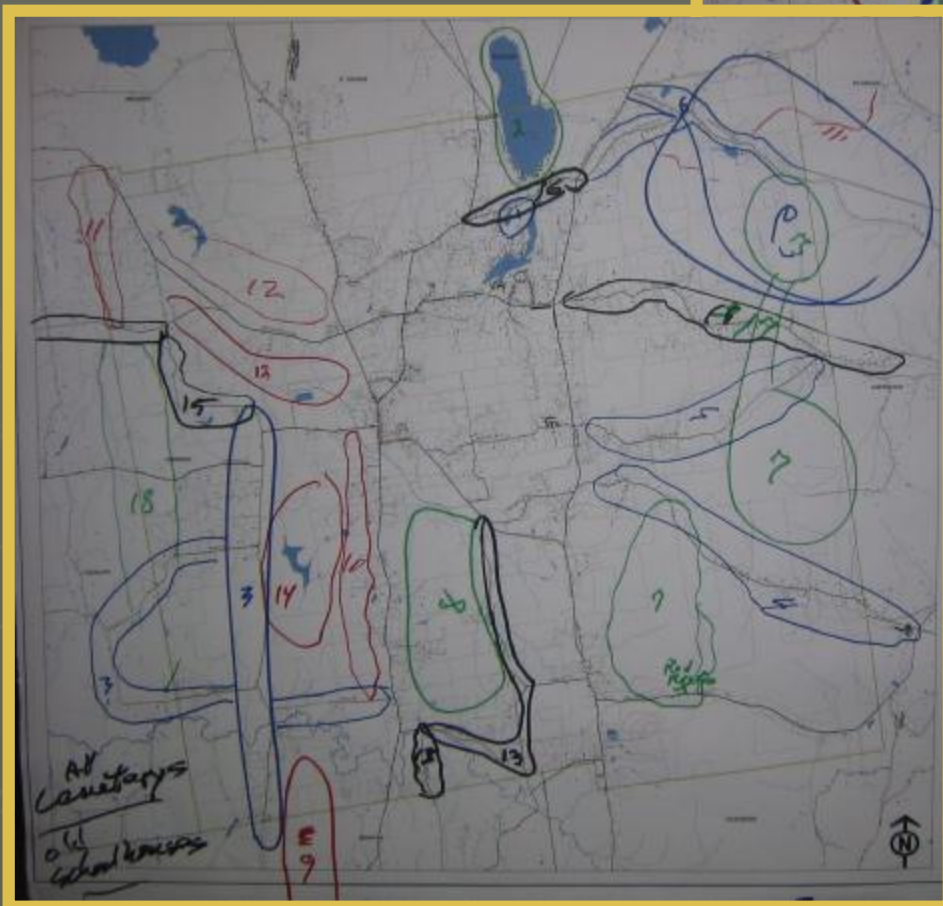
Area #	Location	Significant Attributes or Elements	Conservation Significance of Elements	Threats to Elements	Critical Factors to Consider When Reviewing Proposed Development in the Area	Current Information Sources	Information/Inventory Needed
212	Champlain Valley Lewis Creek Riparian Forest	Lacustrine Plains Dolomite Hills Monkton Quartzite Hills Riparian corridor habitat- large warm water valley stream EOs Rare- Upland Sandpiper, Aquatics Recreation- fishing, boating, skiing	River corridor land cover Significant habitat Clayplain forest quality Floodplain functions	Water pollution Riparian Buffer Parcelization Exotics management Habitat Fragmentation -Riparian corridor -Connectivity to Philo Recreation Agriculture Development	Maintenance and protection of habitat and habitat connectivity Management of Exotics and EOs and water resource Long term stewardship opportunities Restore clayplain forest support habitat	NNHP LCA Wildlife Map LCA Landform Map LCA Aquatic Features	Inventory Dolomite Hills, grassland and subland habitat
212B	Champlain Valley Mt Philo and Linkage to Riparian forest	Dolomite Hills Monkton Quartzite Hills 10 rare species 2 communities -dry oak hickory, HF - Temp - calcareous cliff Recreation	Conservation of rare species in an upland forest. Recreation	Deforestation Habitat Fragmentation Recreation Exotics management Agriculture Development	Strengthen linkage to surrounding habitat lands in Kimball, Laplatte, Lewis watersheds Management plans for exotics control Recreation compatibility with conservation priorities Long term stewardship opportunities	NNHP LCA Wildlife Map LCA Landform Map LCA Aquatic Features	Inventory Linkage to riparian forest and other linkage opportunities
4-2018 review shape	Champlain Valley Shellhouse Mountain and wetland?!	Monkton Quartzite Hills Dolomite Hills Dolomite Valley Lacustrine Plain Wetland complex?! Significant Habitat EO	Landform diversity Habitat connectivity to Little Otter habitat lands	Deforestation Habitat Fragmentation Recreation Exotics management Agriculture Development	Maintenance and protection of habitat and habitat connectivity Management of Exotics and rare EO Long term stewardship opportunities	NNHP LCA Wildlife Map LCA Landform Map LCA Aquatic Features	Inventory restoration and conservation opportunities

Community Values Forum

Hinesburg, VT



Community Values



Community Values

Fishing and
Water Quality

Farmland &
Aesthetics

Hunting and
Recreation

Fishing and
Water Quality



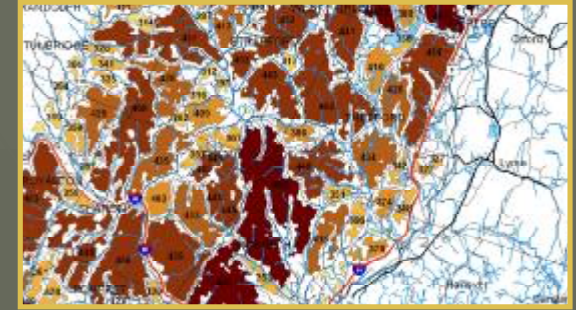
Determining Potential Corridors



Wetlands and
Conserved Land



Likely Road Crossings



Habitat Blocks



Community Value
Mapping



Potential Corridors

More Local Examples

- Shrewsbury Wildlife Crossing overlay district
- Tinmouth Town Plan
- Hartford Wildlife Corridors
- Coordination in the Mad River Valley

Thank You

