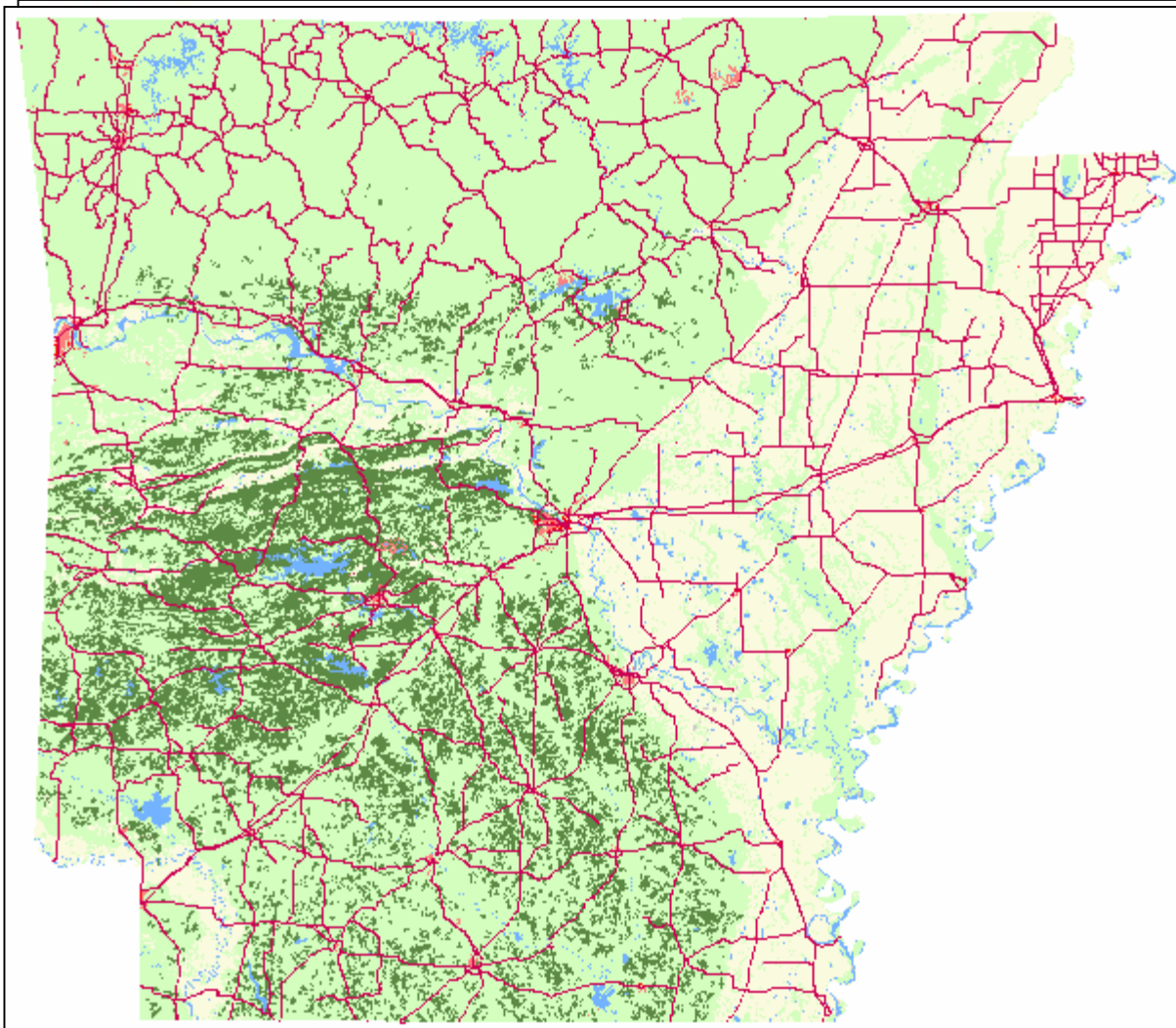
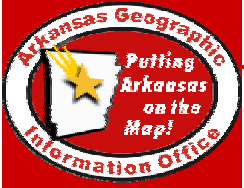


Geographic Information Helps Unlock the Solution to a Very Complex Puzzle

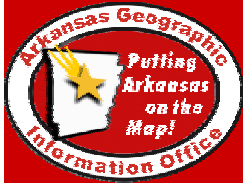
Linking Transportation Planning &
Conservation
Little Rock, AR
June 1, 2006





Land Information Board

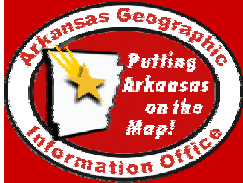
- Created by Arkansas Code 15-21-5 in 1997
- 12 Members: State, Local, Private, Academia
- Set Policies, Procedures and Standards



Arkansas Geographic Information Office



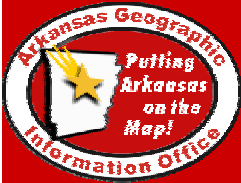
- www.gis.state.ar.us



National Leadership

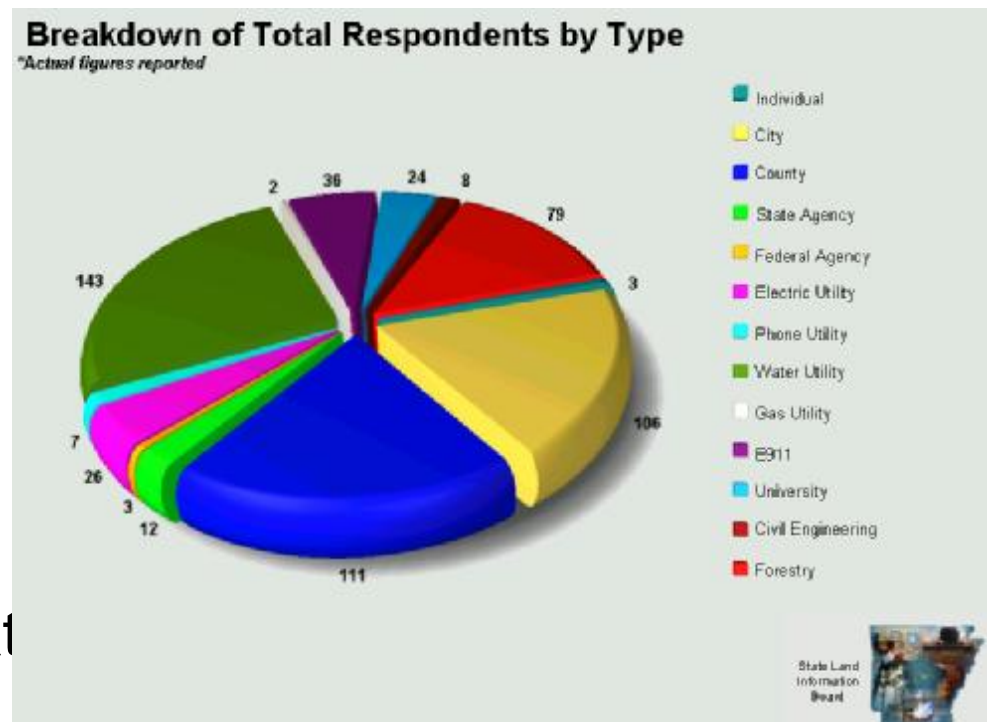
- Ranked 9th in U.S. in 2001 Center for Digital Government
- 2 National Awards in GIS
- Meet 9 out of 9 National Model Characteristics
- 73 Counties Participating in CAMP Program
- 45 Counties Participating in ACF

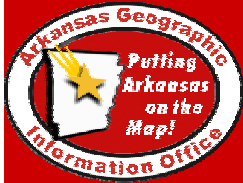




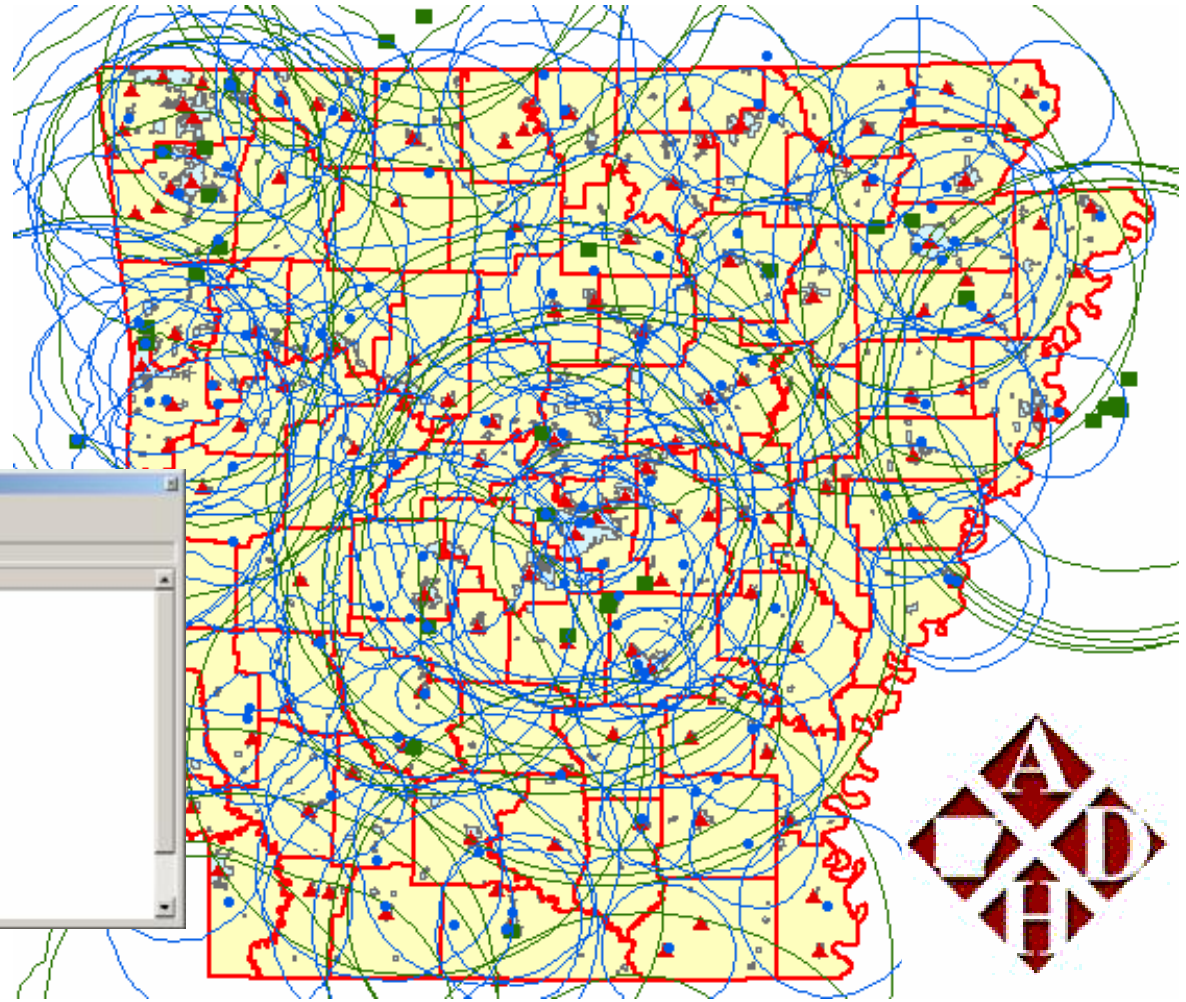
Guiding Principles

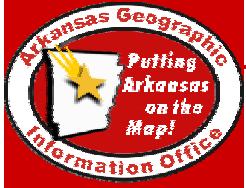
- Create once and use many times
- The best data is local data because it is created at the source
- Trend Shift to county focused
- GIS data creators at the county level become authors in GeoStor





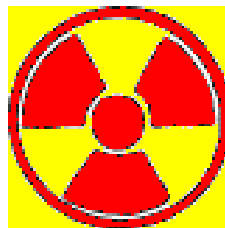
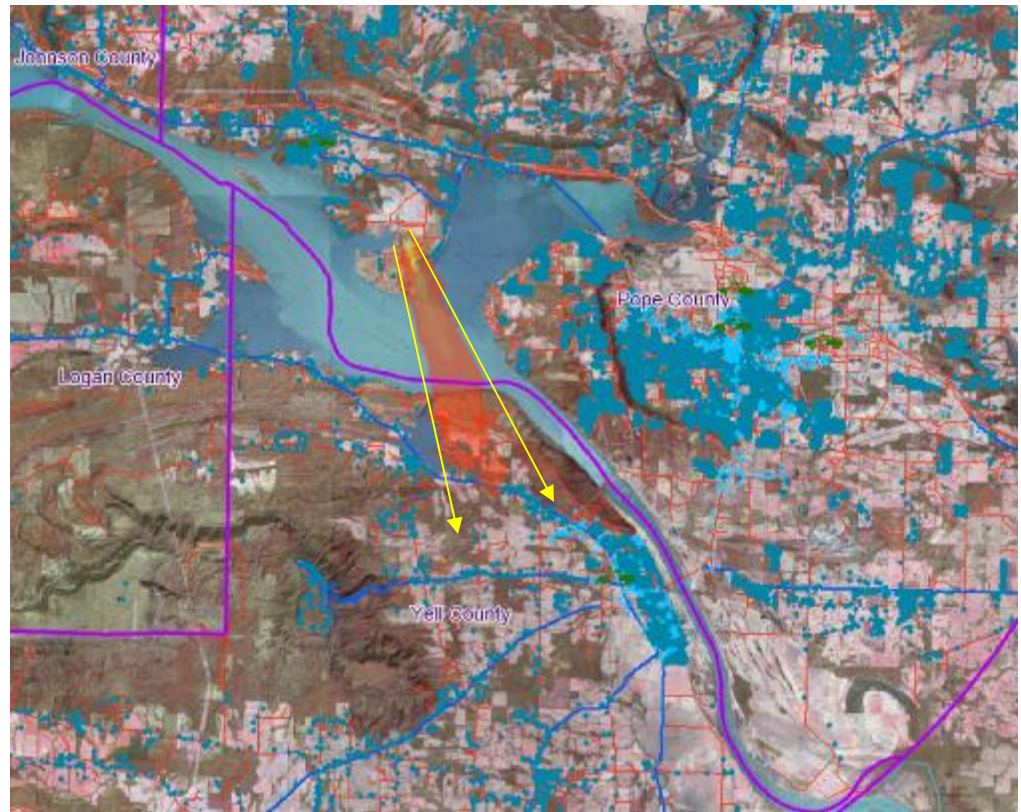
Emergency Notification

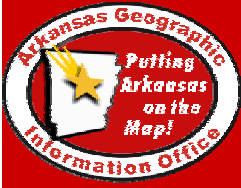




Securing the Homeland

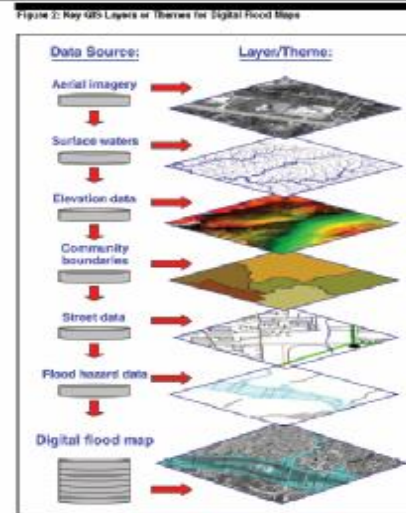
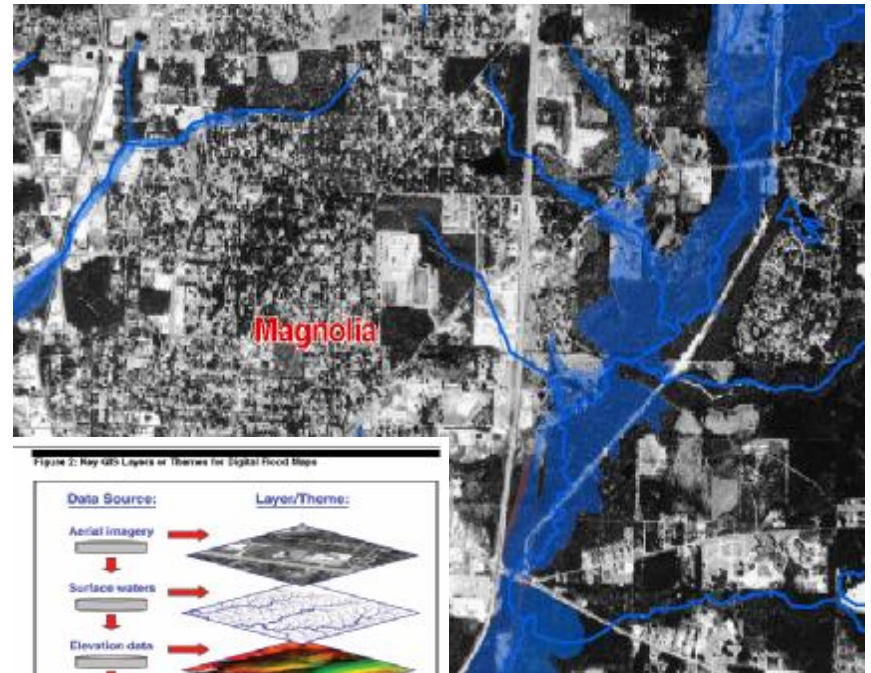
- Preparedness
- Response
- Modeling

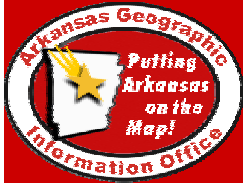




FEMA Flood Map Modernization

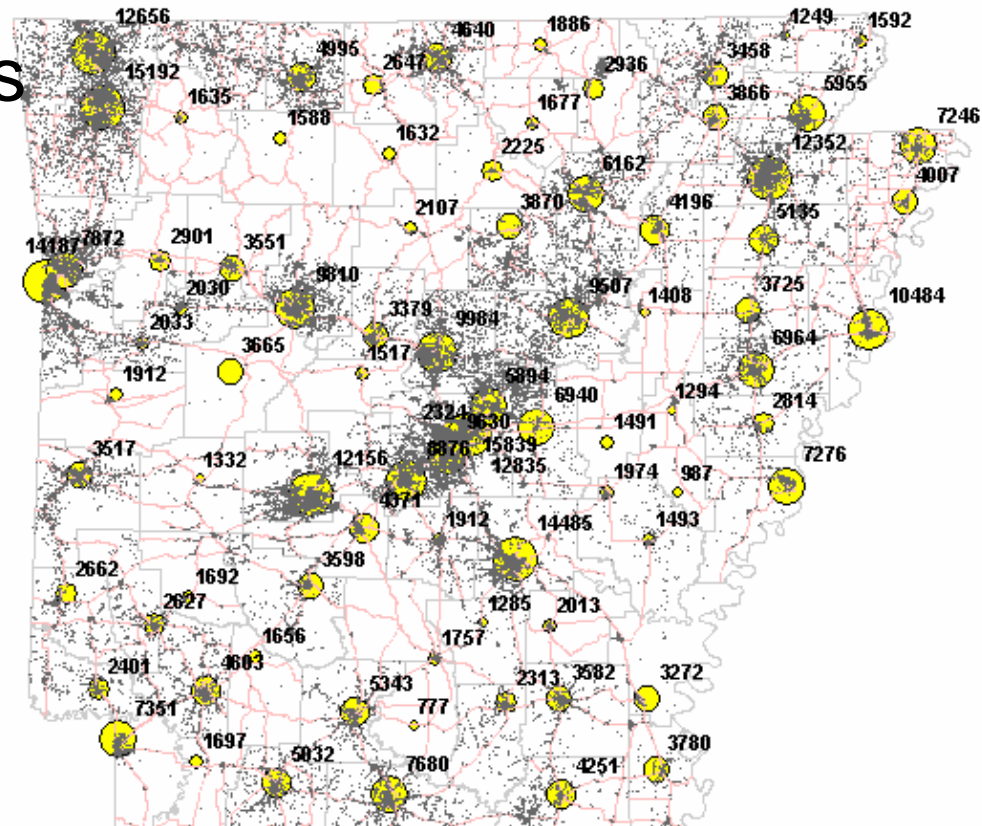
- From Paper to Digital
- New floodplain maps created by FEMA using local sources from GeoStor



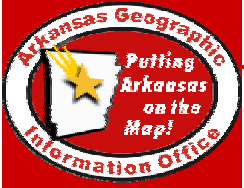


Resource Allocation

- County Offices
- Client Totals



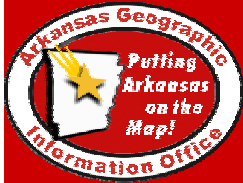
ARKANSAS DEPARTMENT OF
Human Services
A Community of Caring



Strong Economic Development

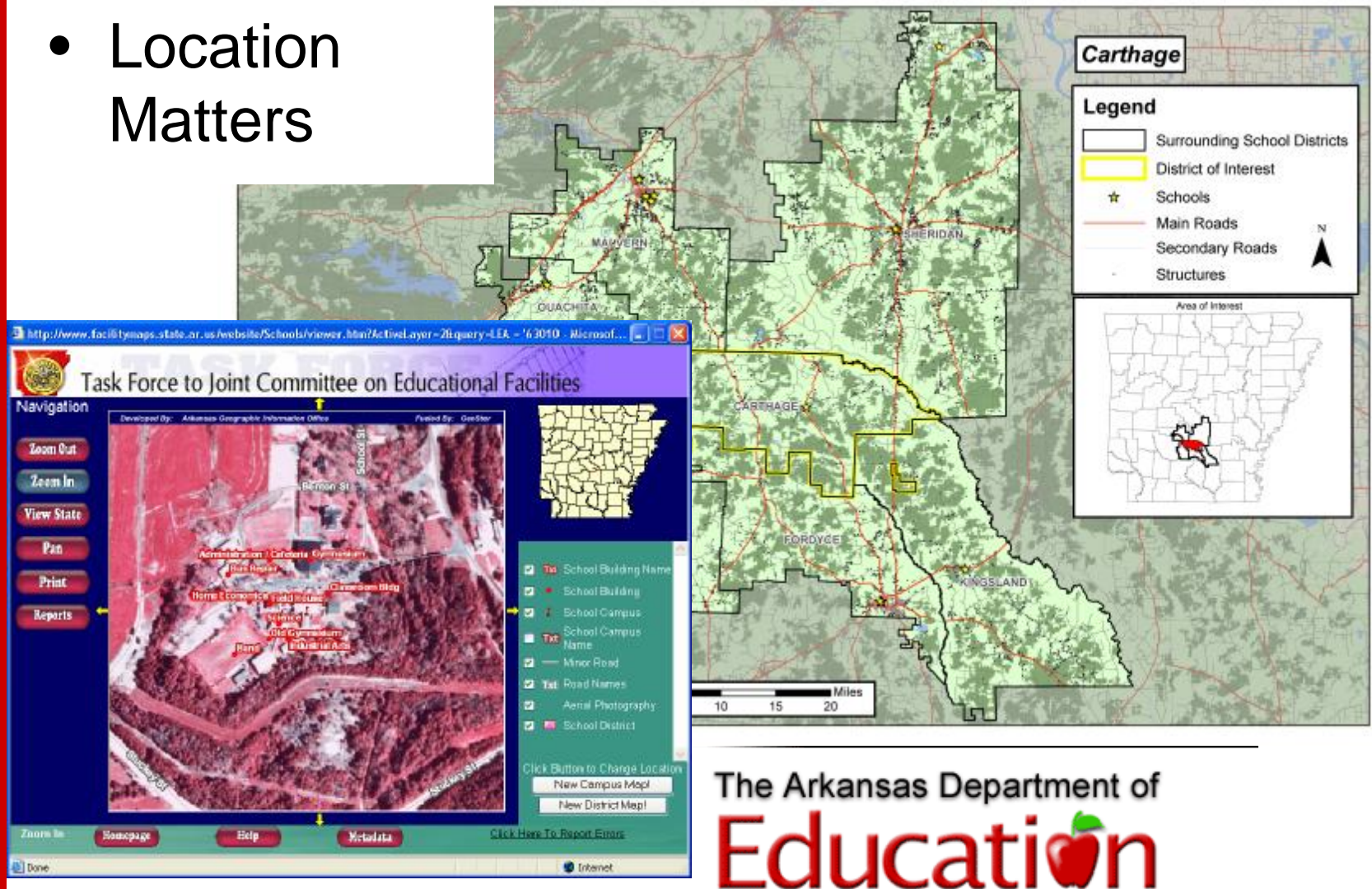
- Candidate Communities With 60 Minute Drive Times



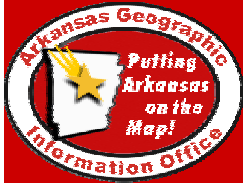


Education Reform

- Location Matters

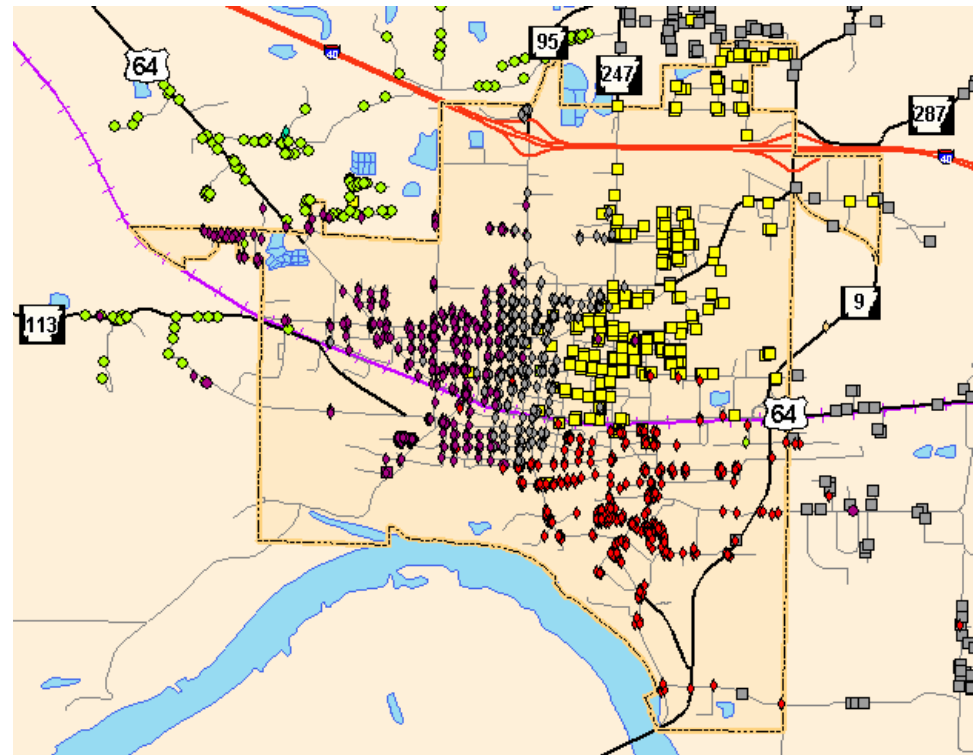


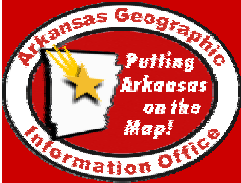
The Arkansas Department of
Education



Election Reform

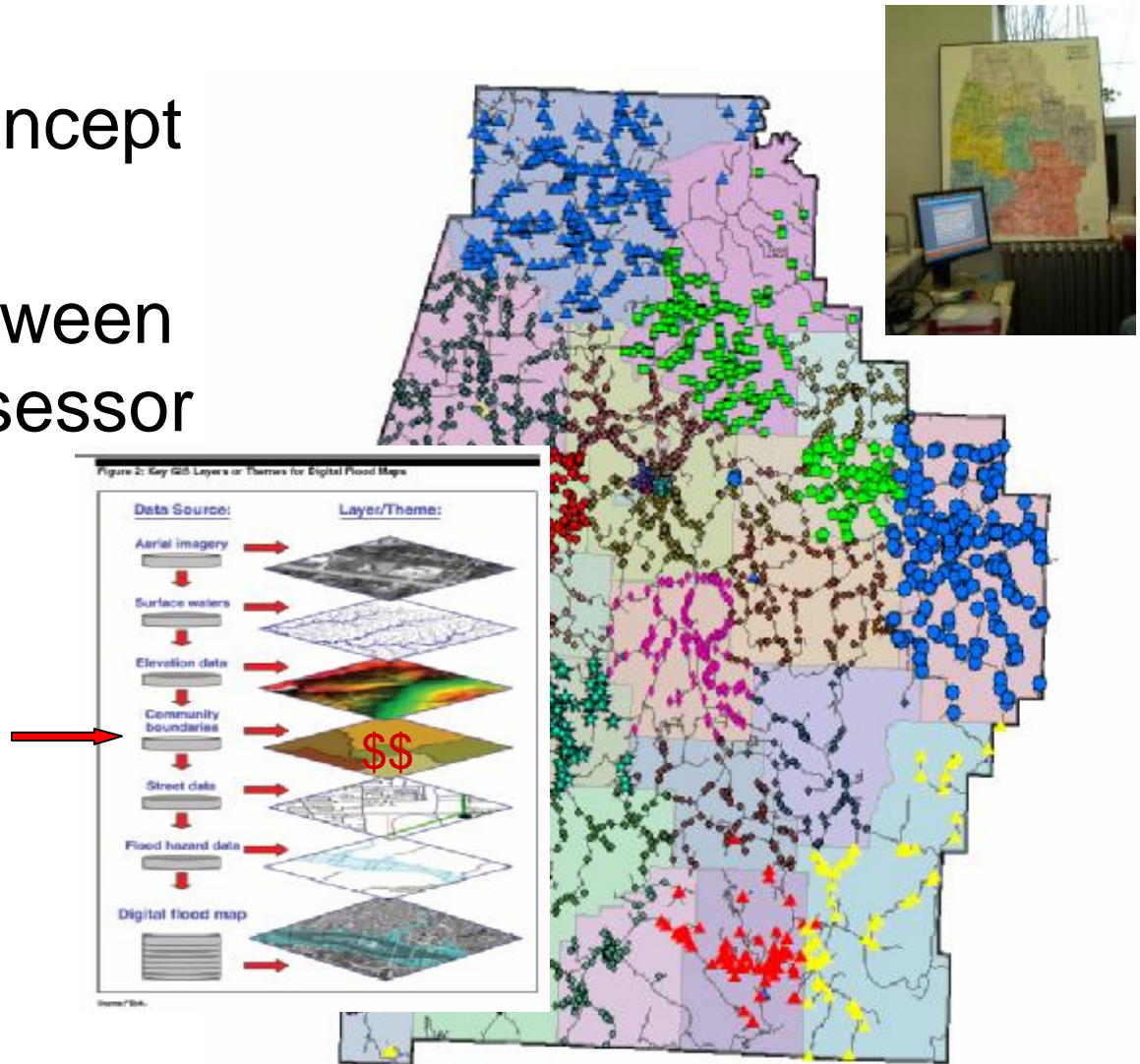
- Where to Vote
- Aid Precinct Assignment

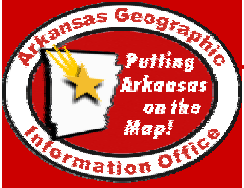




County Clerks & HAVA

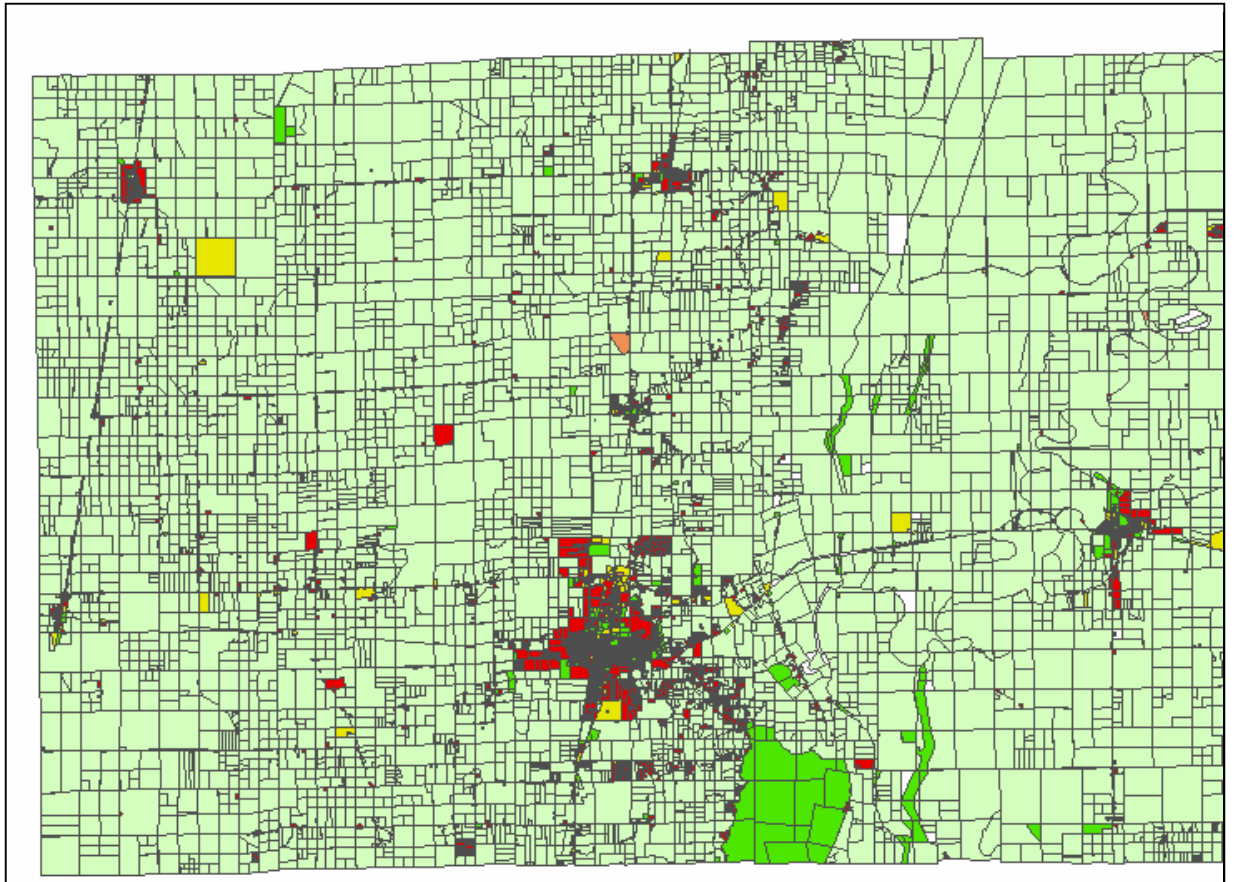
- Proof of Concept Complete
- Parallel between Clerk & Assessor
- Creator of Boundaries
 - Local Rev
 - State Rev
 - Voters & Schools

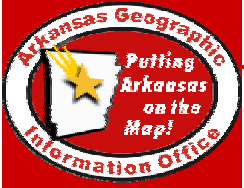




A New Look at Landuse

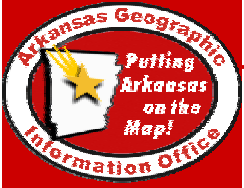
- Cross County



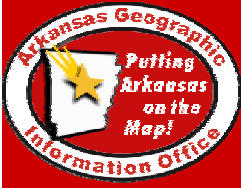


Modernizing Arkansas Parcel Information

- The land title, appraisal, survey, sale, financing, and recordation system in Arkansas is firmly mired in the 19th century. The inefficiency of this byzantine system imposes a tax in the form of unnecessary costs at every stage of the process on every property owner in the state.
- An article in the Wall Street Journal estimated the cost of residential real estate transfers could be cut by 2/3 if the efficiencies of the Internet and Information Technology were to supplant the present system.

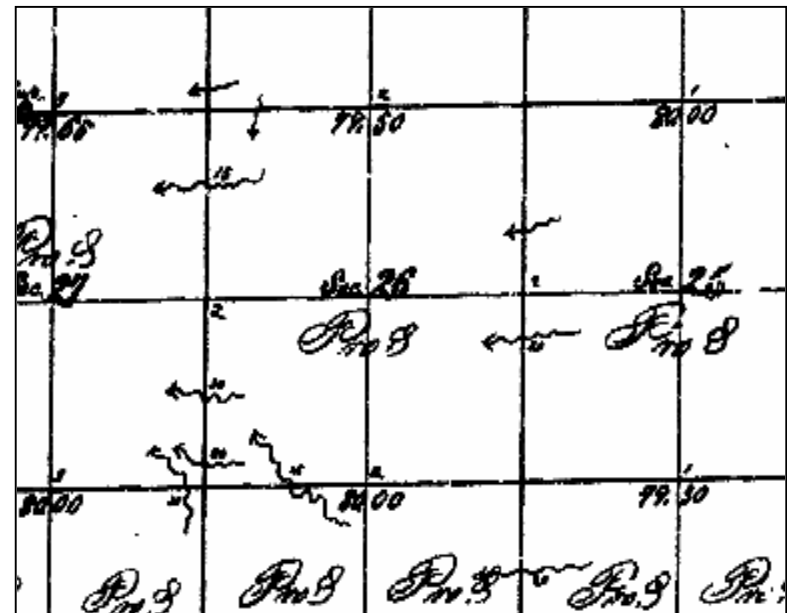


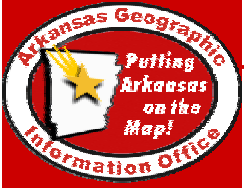
- “In either marking loans to market or the constructing of a national securitized market for real estate – the *key ingredient* is real estate *information* that is timely, accurate, comprehensive and widely disseminated. Quite simply those parts of the country and market segments that do not develop appropriate information resources will get left behind.”
- *Better Real Estate Information is Critical to the Real Estate Financing, Sales and Leasing Markets of Tomorrow.” Rufus Lusk, Integrating GIS & CAMA 1998*



Prenatal Development

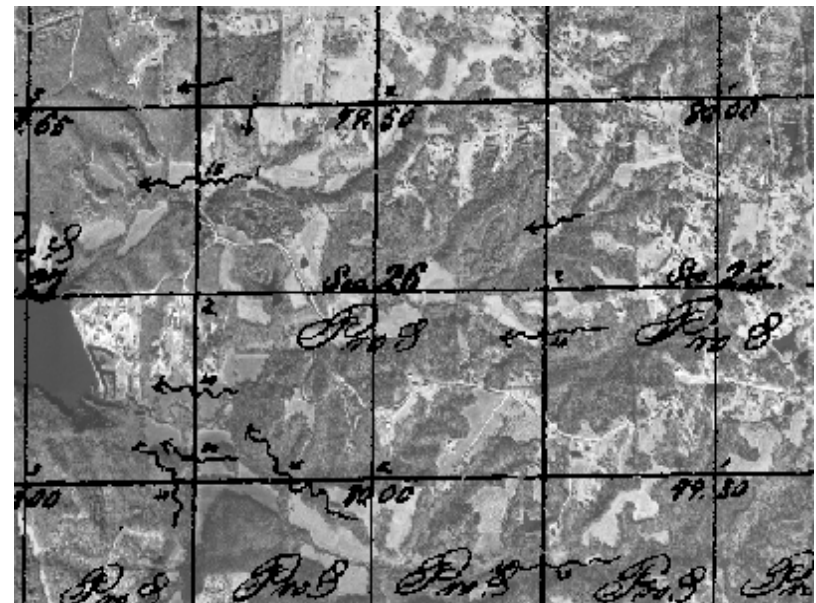
- Organized Land Tenure following Louisiana Purchase
- General Land Office Plats

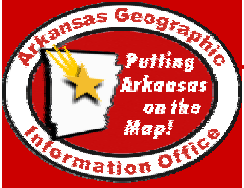




Imagery part of the DNA for a Digital Framework

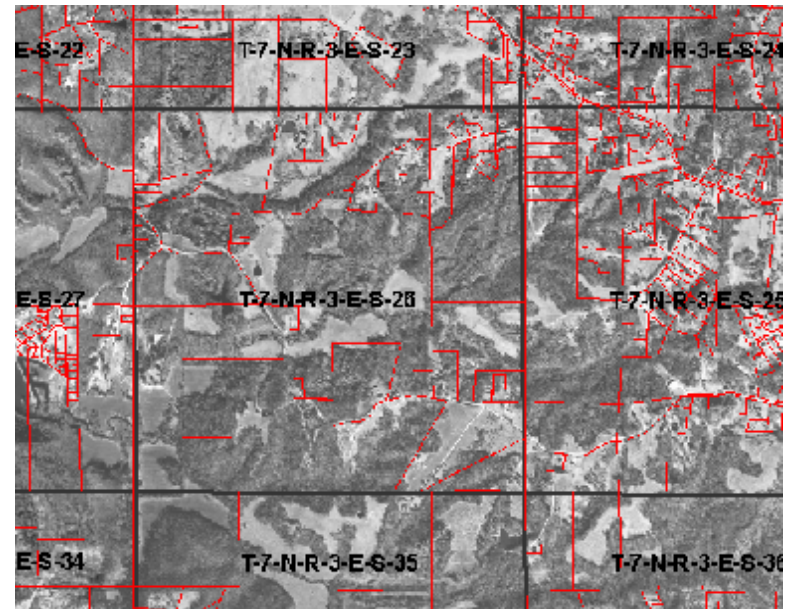
- Public Domain Digital Orthophotography
- Context and Orientation

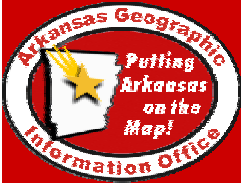




Parcel Fabric

- Individual parcels seamlessly representing the whole fabric
- Reaching this stage opens the door to many possibilities
- Information becomes a location aware tool...





Contact Information

- Arkansas Geographic Information Office
- 124 West Capitol, Suite 200 Little Rock AR 72201
- PH (501) 682-2767
- <http://www.gis.state.ar.us>
- shelby.johnson@arkansas.gov

